

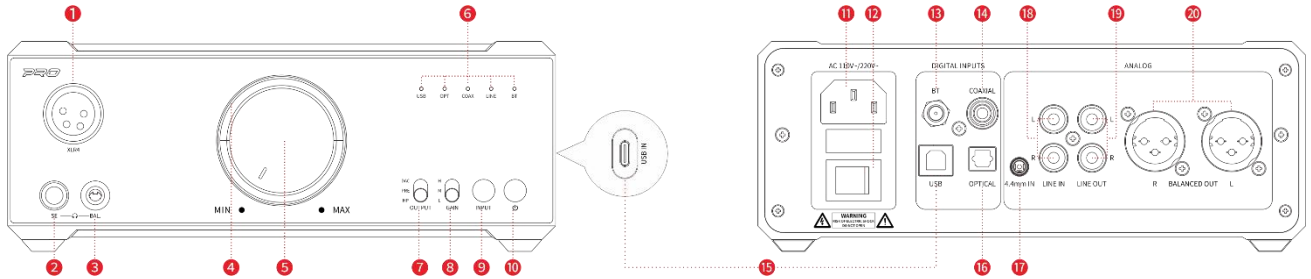


快速入门指南

Quick Start Guide

Model: K9 Pro

Buttons and Ports Labeled



- | | |
|------------------------------------|----------------------------|
| 1. XLR4 balanced headphone output | 2. 6.35mm headphone output |
| 3. 4.4mm balanced headphone output | 4. RGB indicator light |
| 5. Volume knob | 6. Input indicator light |
| 7. Output selection switch | 8. Gain switch |
| 9. Input selection button | 10. Multifunction button |
| 11. Power input | 12. Power switch |
| 13. Bluetooth antenna port | 14. Coaxial input |
| 15. USB input | 16. Optical input |
| 17. 4.4mm balanced line-in | 18. Single-ended line-in |
| 19. Single-ended line-out | 20. Balanced line-out |

Notes:

1. RGB indicator light

*The RGB light in ON state stands for working while in OFF state stands for sleeping.

*Different RGB light colors stand for different sampling rates and Bluetooth codecs. For more details, please visit our website.

2. Output selection switch

DAC: rear panel line-out, fixed volume

PRE: rear panel line-out, adjustable volume

HP: front panel headphone out, adjustable volume

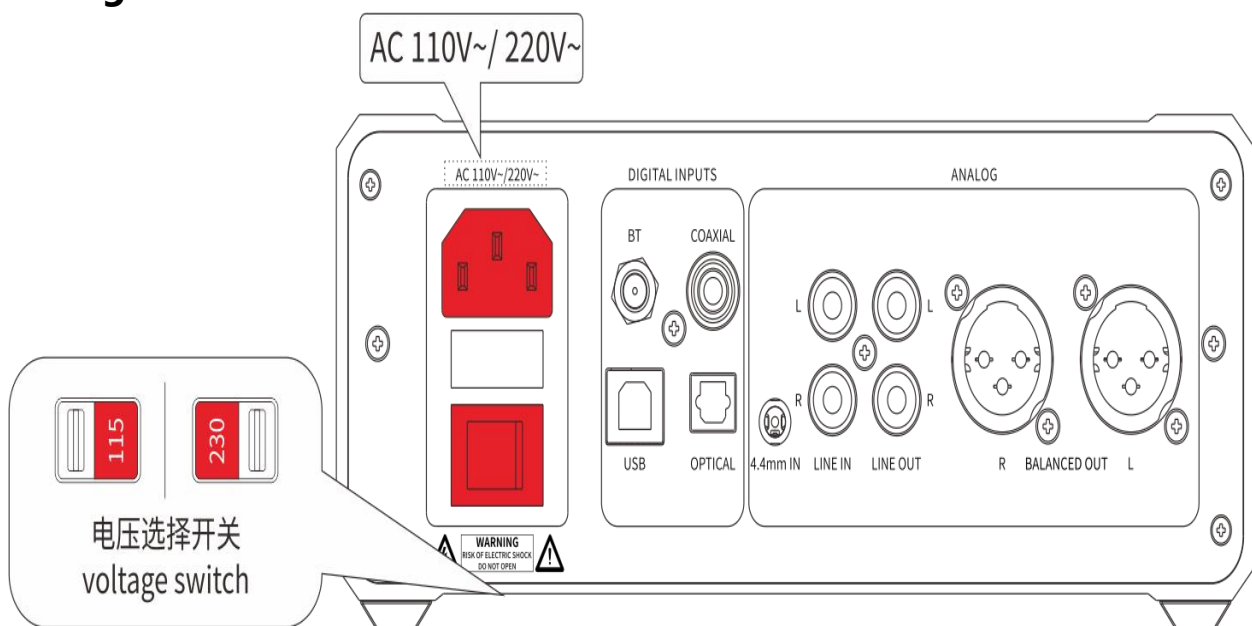
3. Multifunction button

Short press: mute/unmute

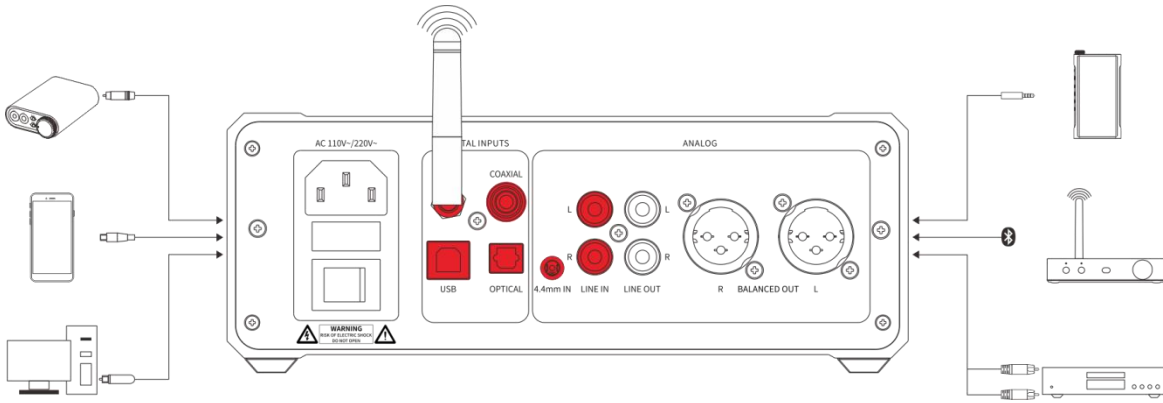
Long press: stand by/wake up

Operation Explained

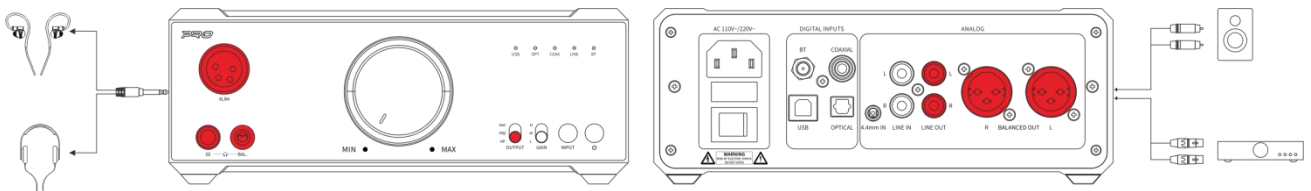
A. Please select the voltage through the voltage switch at the bottom of the device to corresponding voltage position based on your local voltage.



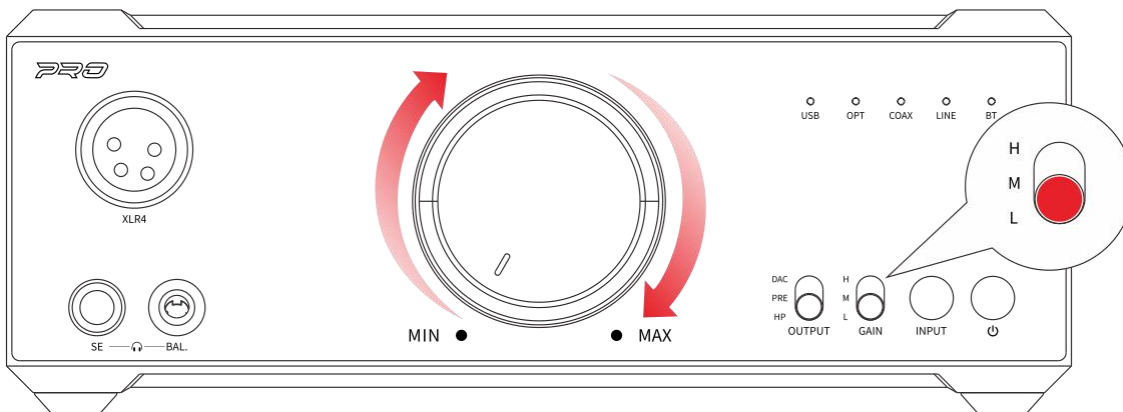
B. Connect the source device to the K9 Pro and select the corresponding input source mode.



C. Connect the K9 Pro to the output device and select the corresponding output mode.



D. Make adjustments to the gain and volume to suit your preference.



To Learn More

1. The K9 Pro can be controlled by FiiO Control App. For more introduction, please visit <https://www.fii.com/>
2. The K9 Pro operates driver-free on Mac OS. For Windows users, please visit our

support website at <https://www.fiio.com/supports> to download the relevant driver.

3. All pictures shown are for illustration only. The actual product may vary due to product enhancement.

Notes and Precautions

★For your safety, please avoid using headphones in dangerous environments.

★Please adjust the volume to a suitable level before wearing headphones so as to protect your hearing.

★Please do not repair or disassemble the device on your own. This device does not include any components that can be self-repaired by users. If there is any breakdown happening to the device, it must be handled by qualified maintenance personnel. If the device is disassembled with the internal circuit reconstructed casually, it will cause trouble for the repair and have a bad effect on the performance and quality of the device.

★The device shall not be subject to water droplets or splashes. Please do not place any containers with liquids inside on the device, such as a vase.

★Please do not put any naked fire sources near the device, such as a lit candle.

★The device should be connected to an electrical outlet with grounding protection.

★Make sure the power button can be operated in a convenient manner.

List of Items Included in the Package (Please check if all the items are included)

K9 Pro
Power cable
USB cable
Bluetooth antenna
Headphone jack adapter
Quick start guide
Warranty card
Instruction card for voltage selection

Instruction card for voltage selection:

1. The K9 Pro was designed with a built-in linear power supply. Please select the appropriate voltage input (through the voltage switch at the bottom of the K9 Pro) based on your local voltage. Otherwise, damage will be caused to the K9 Pro.

2. If you are located in the following countries and regions, please select the voltage of 115V.

There are about 30 countries and regions, such as Japan, Canada, Mexico, Colombia, Guam and Jamaica.

3. If you are located in the following countries and regions, please select the voltage of 230V.

There are about 120 countries and regions, such as China, South Korea, Russia, UK, Argentina, France, Germany, India, Malaysia, Singapore and Australia.