

the eye opener:
DAS LAUFWERK No. 2



SCHEU

The Scheu of Music

SCHEU

The Scheu of Music

Das Laufwerk No.2

„Das Laufwerk“ is German for „the turntable“. As in, THE TURNTABLE. Our turntable with that very proud and distinctive name has recently become SCHEU's top-of-the range model. In terms of performance it even comfortably exceeds the company's previous top model, the Premier, and represents the beginning of a whole new phase for SCHEU.

Weighing in at a total of about 38 kg, this mighty turntable is really a heavyweight contender for the reference league.

By omitting the lead shot chamber and the joining of two shell halves, a turntable of unadorned elegance came into being. Since no lead shot could be used to diminish resonance effects, other solutions needed to be found. By combining various materials such as multi-ply acrylic, steel and bronze, it was possible to achieve extremely effective adaptive resonance suppression and damping, though.

This turntable also features up to three tonearm bases along with the electronically regulated DC motor

with its fine speed adjustment and string drive, an 80-mm platter and height-adjustable steel feet in spike format.

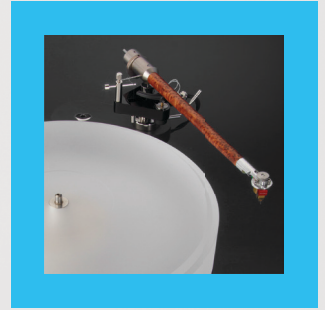
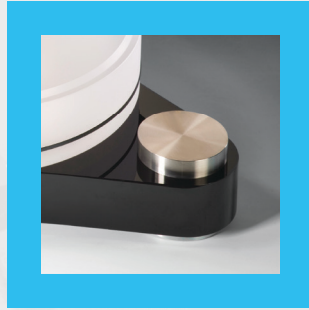
The Sound

A description of sound is of course always subjective. During the in-house development phase the Premier was consistently used as a reference. Das Laufwerk No. 2 comfortably exceeds even this in terms of sound reproduction.

Details are reproduced with outstanding originality. The bass is powerful and contoured, the fundamental sound is absolutely natural. Both width and depth are faithfully reproduced and everything is realistically placed in the soundscape. The treble is not overloaded, so that cymbals, for example, ring long and clear. In spite of the extremely detailed resolution, the musical flow is never lost.



das Laufwerk No. 2



This turntable should appeal not only to those connoisseurs whose interest is purely in music, but also to ambitious listeners seeking to explore the limits of their turntable day after day. It provides an excellent basis and enough scope for you to approach your own individual ideal for the reproduction of music.

Listen for yourself!

Finish & Versions

Das Laufwerk No. 2 is available in polished black acrylic and satin-finish colourless acrylic. There is also an exclusive version with a slate shell.

Armboards for various tonearms are available in acrylic, bronze or slate.

The motor is made out of solid aluminium and can optionally be black anodized or polished to a high gloss. As standard, dark turntables are supplied with a black motor and light/transparent turntables with a high-gloss motor.

Specifications

Turntable:

- Heavyweight turntable, total weight approx. 38 kg, turntable weight 7.5 kg
- Multilayered acrylic shell with stainless steel bases for three tonearms, available in polished black, colourless, polished transparent or in colourless satin-finish.
- Height-adjustable spike-shaped steel feet
- Inverted precision bearings
- 80 mm high, 7.5 kg acrylic platter
- Armboards for various tonearms, available in acrylic or bronze

Motor:

- Electronically regulated DC motor
- Microcontroller with digital 4-Q PI-controller
- Overload protection by integrated speed-dependent current-limitation
- Fine-speed adjustment $\pm 3\%$ for 33 and 45 rpm
- For belt, tape or string-drive

"It has reference quality, and would it be produced by brand XX (please fill in your favourite usual suspect yourself), it would cost double or threefold the price." (TNT-Audio - 2/2007)

"The Laufwerk Slate is an excellent deck ... capable of extracting a massive amount of information off the groove, presenting a platform as neutral across the mid and top as it is deep at the bottom. Most of all, it sounds like a high-end deck that accidentally shrunk the price tag (and nothing else) in the wash. If you are looking for a lightweight upgrade on a Rega, jog on, but if you are wanting a lot of what the really big and heavy guns in the turntable world, without your bank balance taking a pounding in the process, this should be close to the top of your list." (HiFi+ - 4/2013)

Scheu Analog Turntables

Turntables from SCHEU are synonymous from Berlin to Ushuaia with a most audiophile sound quality, tonal balance and, last but not least, outstanding durability. They are all belt-/string-driven heavyweight turntables and they all use an inverted bearing.

Production quality is of the utmost importance to us, and we work exclusively with suppliers

from Germany. This means that our final products are 'Made in Germany' through and through - apart from the Rega arm on some models, which fortunately is being built to the same exacting standards.

Our turntables are carefully manufactured by hand and offer a suitable solution for everyone, no matter what your requirements, from the beginner's turntable Cello to the very sophisticated reference-beater Das Laufwerk No. 2.



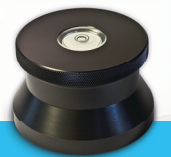
Tonearms



Turntables



Cartridges



Accessories

Most analogue.
The secret, since 1987
handmade in Germany.

www.scheu-analogue.com

 **scheuanalog**