

everybody digs the
CELLO CLASSIC LINE



SCHEU

The Scheu of Music

SCHEU

The Scheu of Music

Cello Classic Line

With the SCHEU Cello Classic Line, we wanted to take a step back in time, to that most classical form: a rectangular record player. All three models have a resonance-optimised turntable chassis in a layered structure. Multiple layers of wood and special absorption materials are glued together and veneered with real wood (tineo).

The Cello Classic Line is divided into three models with different features (tonearms and cartridges), different shell structures and different shell designs.

Cello Classic Line Basic

On the Basic model of the Cello Classic Line, a Rega RB 202 is installed as the tonearm and an Ortofon Super OM 10 as the cartridge.



Basic



Evolution

Cello Classic Line Evolution

The Evolution model of the Cello Classic Line also features the tried-and-tested Rega RB 202 arm. The cartridge, however, is an AT 100E from Audiotecnica. The Evolution also features a more complex shell structure.



Cello Classic Line



Timbre



Specifications

Cello Classic Line Basic

- Chassis: resonance optimised layer construction, 40 mm height, furnished body (Tineo), dimensions 425 x 340 mm
- Motor: electronically regulated DC-motor, massive metal, stand-alone
- Inverted precision platter bearing
- Platter: acrylic, matt, 2.7 kg, 30 mm height
- Incl. Rega RB 202 and Ortofon Super OM 10
- Weight: ca. 8 kg

Cello Classic Line Evolution

- Chassis: resonance optimised layer construction, 50 mm height, furnished body (Tineo), dimensions 425 x 340 mm
- Motor: electronically regulated DC-motor, massive metal, stand-alone
- Inverted precision platter bearing
- Platter: acrylic, matt, 2.7 kg, 30 mm height
- Incl. Rega RB 202 and Audio-technica AT 100E
- Weight: ca. 10 kg

Cello Classic Line Timbre

- Chassis: resonance optimised layer construction, 50 mm height, furnished body (Tineo), with 20 mm slate top, for 9" tone arms
- Motor: electronically regulated DC-motor, massive metal, stand-alone
- Inverted precision platter bearing
- Platter: acrylic, matt, 2.7 kg, 30 mm height
- Weight: ca. 25 kg

Cello Classic Line Timbre

Unlike the Basic and Evolution models, the Cello Classic Line Timbre features slate in the body design. While the Basic and Evolution models are restricted to the Rega arm, we are much more flexible when it comes to selecting a tone-arm for the Timbre and can offer arm boards for other 9-inch tone-arms. The Timbre comes with our standard arm board, on which the Scheu Cantus or Scheu Tacco, for example, can be installed.



The SCHEU Cello Classic Line Timbre was awarded 'Product of The Year' by the Cinema Awards 2015 in Russia.

Scheu Analog Turntables

Turntables from SCHEU are synonymous from Berlin to Ushuaia with a most audiophile sound quality, tonal balance and, last but not least, outstanding durability. They are all belt-/string-driven heavyweight turntables and they all use an inverted bearing.

Production quality is of the utmost importance to us, and we work exclusively with suppliers

from Germany. This means that our final products are 'Made in Germany' through and through - apart from the Rega arm on some models, which fortunately is being built to the same exacting standards.

Our turntables are carefully manufactured by hand and offer a suitable solution for everyone, no matter what your requirements, from the beginner's turntable Cello to the very sophisticated reference-beater Das Laufwerk No. 2.

Errors and omissions excepted. Specifications and design are subject to changes without prior notice.



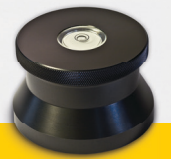
Tonearms



Turntables



Cartridges



Accessories

Most analogue.
The secret, since 1987
handmade in Germany.

www.scheu-analogue.com

 [scheuanalog](https://www.facebook.com/scheuanalog)