

SONANCE

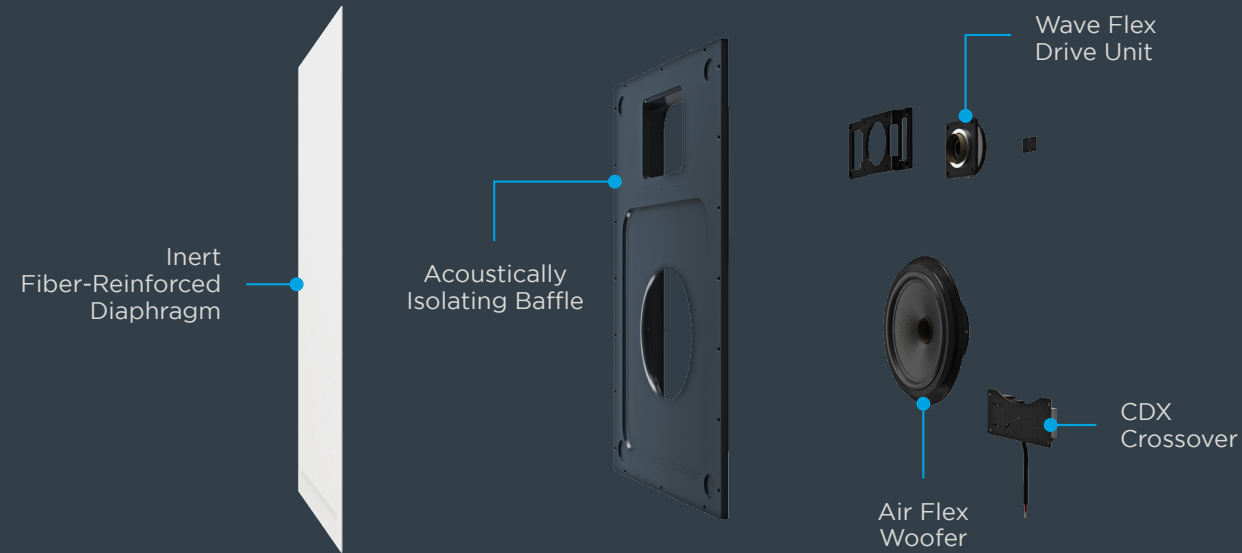
INVISIBLE SERIES

## INVISIBLE SERIES

Invisible Speakers are the pinnacle of the Sonance “Designed to Disappear” strategy. After a multi-year development process, the all-new Motion Flex Invisible Series line incorporates new breakthroughs in installation and audio quality, and firmly entrenches Sonance as the unrivaled leader in discreet performance audio.

# INTRODUCING MOTION FLEX TECHNOLOGY

Technology that is out of sight, but not out of mind.



## MOTION FLEX DEFINED

The new Sonance Invisible Series, featuring Motion Flex Technology, offers a suite of advancements in invisible speaker engineering that together delivers unparalleled acoustic performance and redefines what is possible from an invisible speaker.

### WAVE FLEX DRIVE UNIT

This high-bandwidth midrange and high-frequency transducer drive unit propagates sound via a bending-wave principle, delivering velvety-smooth mids and crystal-clear highs while enabling a lower crossover point to facilitate high fidelity listening.

### AIR FLEX WOOFER

By coupling a glass-fiber woofer to our acoustically inert diaphragm via a pocket of air, the active diaphragm area moves like a piston. The result is robust and powerful bass that defies expectations and delivers unsurpassed sonic quality.

### ACOUSTICALLY ISOLATED BAFFLE

The diaphragm is split into two active areas that are completely isolated. This prevents the bending motion of the Wave Flex Drive Unit from interfering with the pistonic motion of the Air Flex Woofer, enabling ultra-low distortion and a level of sonic transparency not previously possible in invisible speakers.

### CONSTANT DIRECTIVITY CROSSOVER (CDX)

Sonance's proprietary CDX crossover provides uniquely smooth off-axis frequency response, resulting in greater fidelity and coverage for each speaker. In the all new Invisible lineup, the CDX crossover allows for almost 180° of horizontal and vertical dispersion.

# INSTALLATION

Sonance has revolutionized the invisible speaker category beyond just performance and design with innovative construction-friendly and reliable installation technology.

## INSTALLATION ADVANTAGES.

- Sonance DISC System to standardize thickness of topping compound on the job site with precision to achieve consistent performance from every speaker and subwoofer
- Includes models compatible with 12" on-center stud and joist spacing
- Every model in the line can be installed as finish-up-to or finish-over
- Optional installation accessories: pre-construction brackets, space savers, and noise-isolating enclosure



## SONANCE DEPTH IDENTIFICATION SENSING CALIBRATION (DISC) SYSTEM

The Sonance DISC System works by using a high-accuracy depth gauge and embedded locator discs to measure the thickness of a finish applied over the surface of a Sonance Invisible Speaker. This allows for a consistent finish and performance within specifications every time.



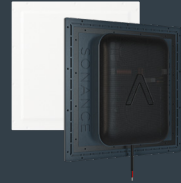
## THE FUTURE OF INVISIBLE SOUND

New Sonance Invisible Series speakers and subwoofers, featuring Motion Flex Technology, provide revolutionary audio for any application, transforming any space into a magical experience without compromise to performance or design.



# INVISIBLE SERIES SPEAKERS

New Sonance Invisible Series speakers offer enhancements that cannot be seen but can definitely be heard. Much attention and detail went into every aspect of performance and installation, to deliver crisp detailed audio playback that rivals, and in many cases, surpasses traditional architectural speaker performance.



## IS6

<b>Best Used In</b>	Smaller, compact spaces like narrow hallways
<b>Wave Flex Drive Unit</b>	20in <sup>2</sup> (127cm <sup>2</sup> ) bending wave diaphragm   1.75in (44mm) voice coil
<b>Air Flex Woofer</b>	98in <sup>2</sup> (633cm <sup>2</sup> ) air pulse diaphragm   6.5in (165mm) carbon fiber woofer
<b>Frequency Response (+/- 3dB)</b>	50Hz-30kHz
<b>Nominal Impedance (Ohms)</b>	6
<b>Power Handling (RMS)</b>	100W
<b>Sensitivity (2.83V/1m)</b>	84dB
<b>Dispersion</b>	170° hemispherical up to 10kHz
<b>Dimensions (WxHxD)</b>	16.10" x 16.10" x 3.15" (409mm x 409mm x 80mm)
<b>Mounting Depth</b>	2.67" (68mm)
<b>Optional Accessories</b>	Preconstruction bracket, space saver, noise-isolating enclosure



## IS8

<b>Best Used In</b>	Large residential spaces such as entryways, living rooms, or multipurpose rooms
<b>Wave Flex Drive Unit</b>	29in <sup>2</sup> (188cm <sup>2</sup> ) bending wave diaphragm   1.75in (44mm) voice coil
<b>Air Flex Woofer</b>	191in <sup>2</sup> (1234cm <sup>2</sup> ) air pulse diaphragm   8in (203mm) carbon fiber woofer
<b>Frequency Response (+/- 3dB)</b>	40Hz-30kHz
<b>Nominal Impedance (Ohms)</b>	6
<b>Power Handling (RMS)</b>	160W
<b>Sensitivity (2.83V/1m)</b>	86dB
<b>Dispersion</b>	170° hemispherical up to 10kHz
<b>Dimensions (WxHxD)</b>	16.10" x 24.13" x 3.15" (409mm x 613mm x 80mm)
<b>Mounting Depth</b>	2.67" (68mm)
<b>Optional Accessories</b>	Preconstruction bracket, space saver, noise-isolating enclosure



# INVISIBLE SERIES SPEAKERS



## IS10

### Best Used In

Large residential spaces such as entryways, living rooms, or multipurpose rooms

### Wave Flex Drive Unit

29in<sup>2</sup> (188cm<sup>2</sup>) bending wave diaphragm | 1.75in (44mm) voice coil

### Air Flex Woofer

244in<sup>2</sup> (1573cm<sup>2</sup>) air pulse diaphragm | 10in (254mm) carbon fiber woofer

### Frequency Response (+/- 3dB)

35Hz-30kHz

### Nominal Impedance (Ohms)

6

### Power Handling (RMS)

200W

### Sensitivity (2.83V/1m)

87dB

### Dispersion

170° hemispherical up to 10kHz

### Dimensions (WxHxD)

16.10" x 28.66" x 3.15" (409mm x 728mm x 80mm)

### Mounting Depth

2.67" (68mm)

### Optional Accessories

Preconstruction bracket, space saver, noise-isolating enclosure



# INVISIBLE SUBWOOFERS

The concept of installing subwoofers into the wall is not new. But being able to successfully install and finish a high-performance subwoofer into a surface with zero visual impact is unique. Sonance Invisible Series subwoofers hold nothing back, delivering powerful bass with two performance levels to choose from that have an impactful presence in the room with no visual evidence where design is of ultimate importance.

## IS10W

### Best Paired With

Pair with IS6 for extended bass in distributed audio or home theater systems. Add to visible speaker systems such as Sonance VP or Architectural Series for totally invisible bass augmentation.

Air Flex Woofer	244in <sup>2</sup> (1573cm <sup>2</sup> ) air pulse diaphragm   10in (254mm) carbon fiber woofer
Frequency Response (+/- 3dB)	35Hz-250Hz
Nominal Impedance (Ohms)	6
Power Handling (RMS)	200W
Sensitivity (2.83V/1m)	87dB
Dispersion	180° hemispherical
Dimensions (WxHxD)	16.10" x 24.13" x 3.15" (409mm x 613mm x 80mm)
Mounting Depth	2.67" (68mm)
Optional Accessories	Preconstruction bracket, space saver, noise-isolating enclosure

## IS15W

### Best Paired With

Pair with IS8 or IS10 for extended bass in distributed audio or home theater systems.

Air Flex Woofer	592in <sup>2</sup> (3819cm <sup>2</sup> ) air pulse diaphragm   15in (381mm) carbon fiber woofer
Frequency Response (+/- 3dB)	30Hz-250Hz
Nominal Impedance (Ohms)	6
Power Handling (RMS)	250W
Sensitivity (2.83V/1m)	93dB
Dispersion	180° hemispherical
Dimensions (WxHxD)	32.20" x 32.20" x 3.86" (818mm x 818mm x 98mm)
Mounting Depth	3.15" (86mm)
Optional Accessories	Preconstruction bracket and space saver





# COMMERCIAL APPLICATIONS

Sonance Invisible Series Speakers are perfect for luxury retail boutiques, hotels, and other high-end spaces that require best-in-class performance with zero visual intrusion.

## IS8T

### Best Used In

Commercial venues such as luxury retail stores, design-centric hotels, residential high rise apartments, and any premium space where audio should be hidden to preserve the atmosphere.

### Wave Flex Drive Unit

29in<sup>2</sup> (188cm<sup>2</sup>) bending wave diaphragm | 1.75in (44mm) voice coil

### Air Flex Woofer

191in<sup>2</sup> (1234cm<sup>2</sup>) air pulse diaphragm | 8in (203mm) carbon fiber woofer

### Frequency Response (+/- 3dB)

40Hz-30kHz

### Nominal Impedance (Ohms)

6

### Power Handling (RMS)

160W

### Sensitivity (2.83V/1m)

86dB

### Dispersion

170° hemispherical up to 10kHz

### Transformer

60W w/ Laminated Core Technology

### Transformer Taps

Primary taps (70V): 7.5W, 15W, 30W, 60W

Primary taps (100V): 15W, 30W, 60W

5 Ohm bypass

### Dimensions (WxHxD)

16.10" x 24.13" x 3.86" (409mm x 613mm x 98mm)

### Mounting Depth

3.15" (86mm)

### Enclosure

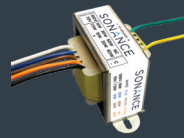
Integrated UL-listed enclosure

### Optional Accessories

Preconstruction bracket, space saver

## SONANCE LAMINATED CORE TRANSFORMER TECHNOLOGY

The Sonance Laminated Core Transformer is built into the IS8T to deliver distortion-free, wide-bandwidth audio for uncompromising performance in 70V/100V commercial applications.



# SONANCE

BEYOND SOUND

©2020 Sonance. All rights reserved. Sonance, James Loudspeaker and IPORT are registered trademarks.

Due to continuous product improvement, all features and specifications are subject to change without notice.  
For the latest Sonance product specification information visit our website: [www.sonance.com](http://www.sonance.com)

Sonance • 991 Calle Amanecer • San Clemente, CA 92673 USA  
09.11.2020